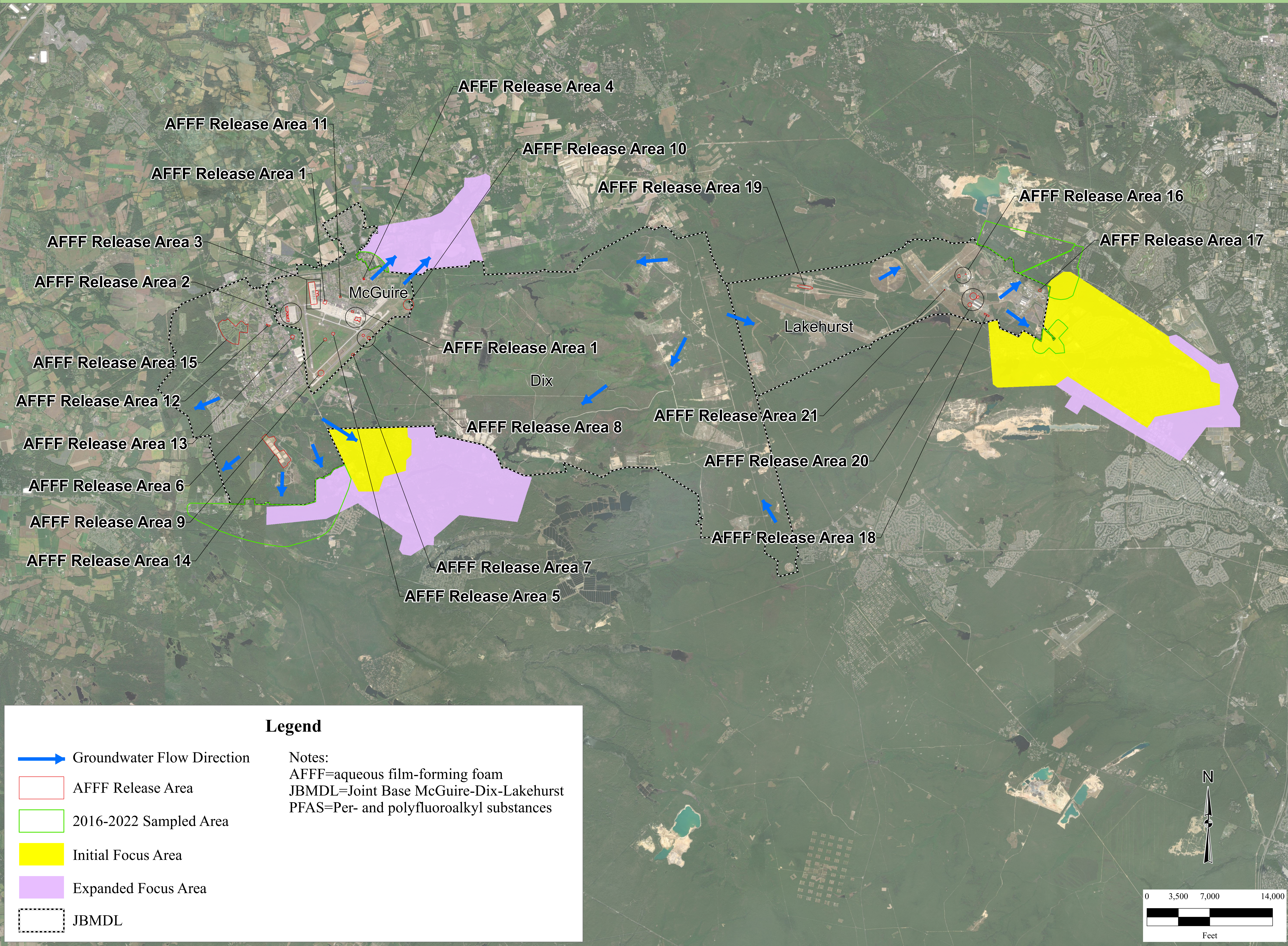











# PFAS Off-Base Response, Joint Base McGuire-Dix-Lakehurst—New Jersey





# PFAS Off-Base Response McGuire Sampling Area, Joint Base McGuire-Dix-Lakehurst—New Jersey

## Legend

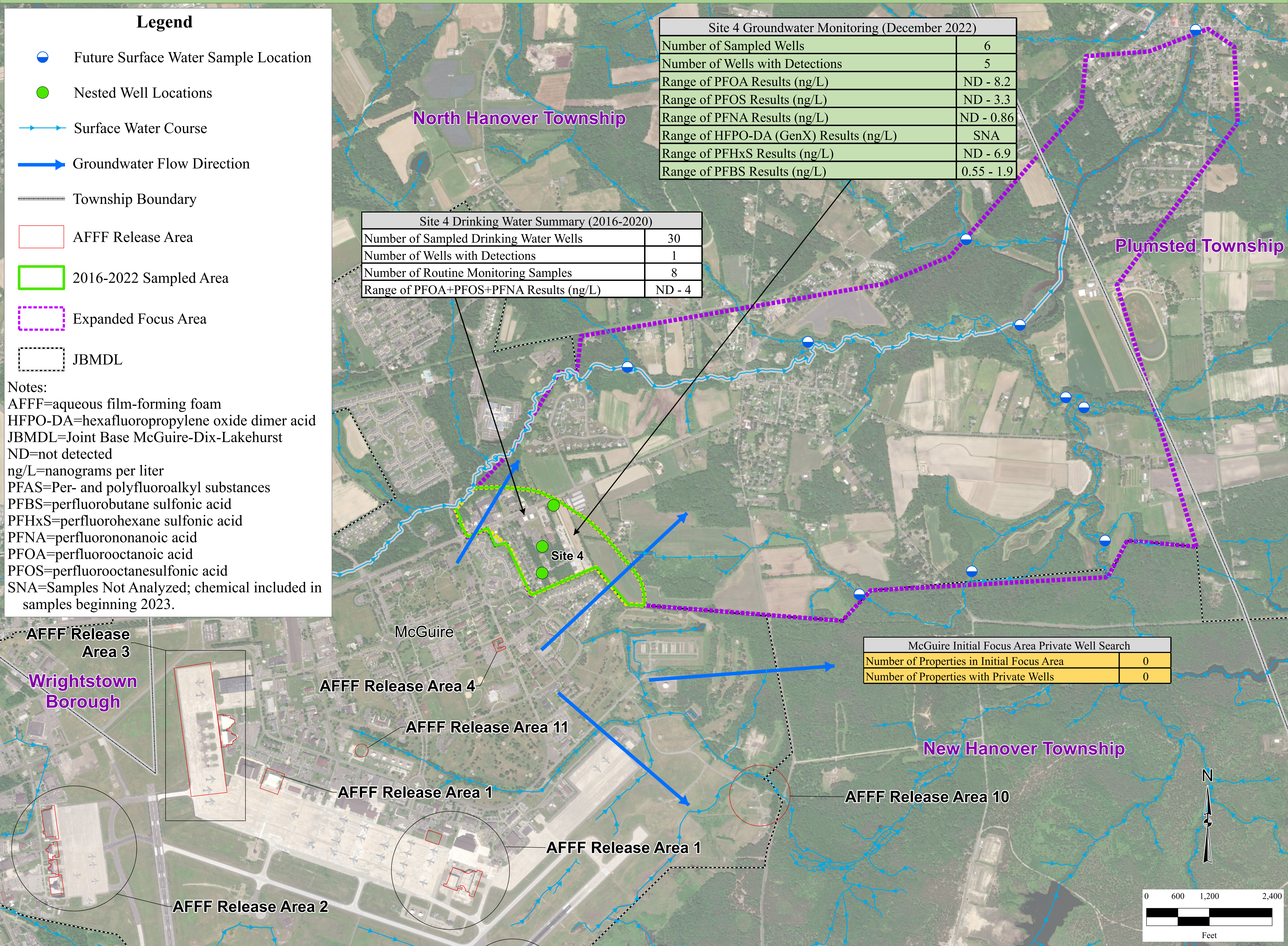
-  Future Surface Water Sample Location
-  Nested Well Locations
-  Surface Water Course
-  Groundwater Flow Direction
-  Township Boundary
-  AFFF Release Area
-  2016-2022 Sampled Area
-  Expanded Focus Area
-  JBMDL

Notes:  
AFFF=aqueous film-forming foam  
HFPO-DA=hexafluoropropylene oxide dimer acid  
JBMDL=Joint Base McGuire-Dix-Lakehurst  
ND=not detected  
ng/L=nanograms per liter  
PFAS=Per- and polyfluoroalkyl substances  
PFBS=perfluorobutane sulfonic acid  
PFHxS=perfluorohexane sulfonic acid  
PFNA=perfluorononanoic acid  
PFOA=perfluorooctanoic acid  
PFOS=perfluorooctanesulfonic acid  
SNA=Samples Not Analyzed; chemical included in samples beginning 2023.

Site 4 Groundwater Monitoring (December 2022)	
Number of Sampled Wells	6
Number of Wells with Detections	5
Range of PFOA Results (ng/L)	ND - 8.2
Range of PFOS Results (ng/L)	ND - 3.3
Range of PFNA Results (ng/L)	ND - 0.86
Range of HFPO-DA (GenX) Results (ng/L)	SNA
Range of PFHxS Results (ng/L)	ND - 6.9
Range of PFBS Results (ng/L)	0.55 - 1.9

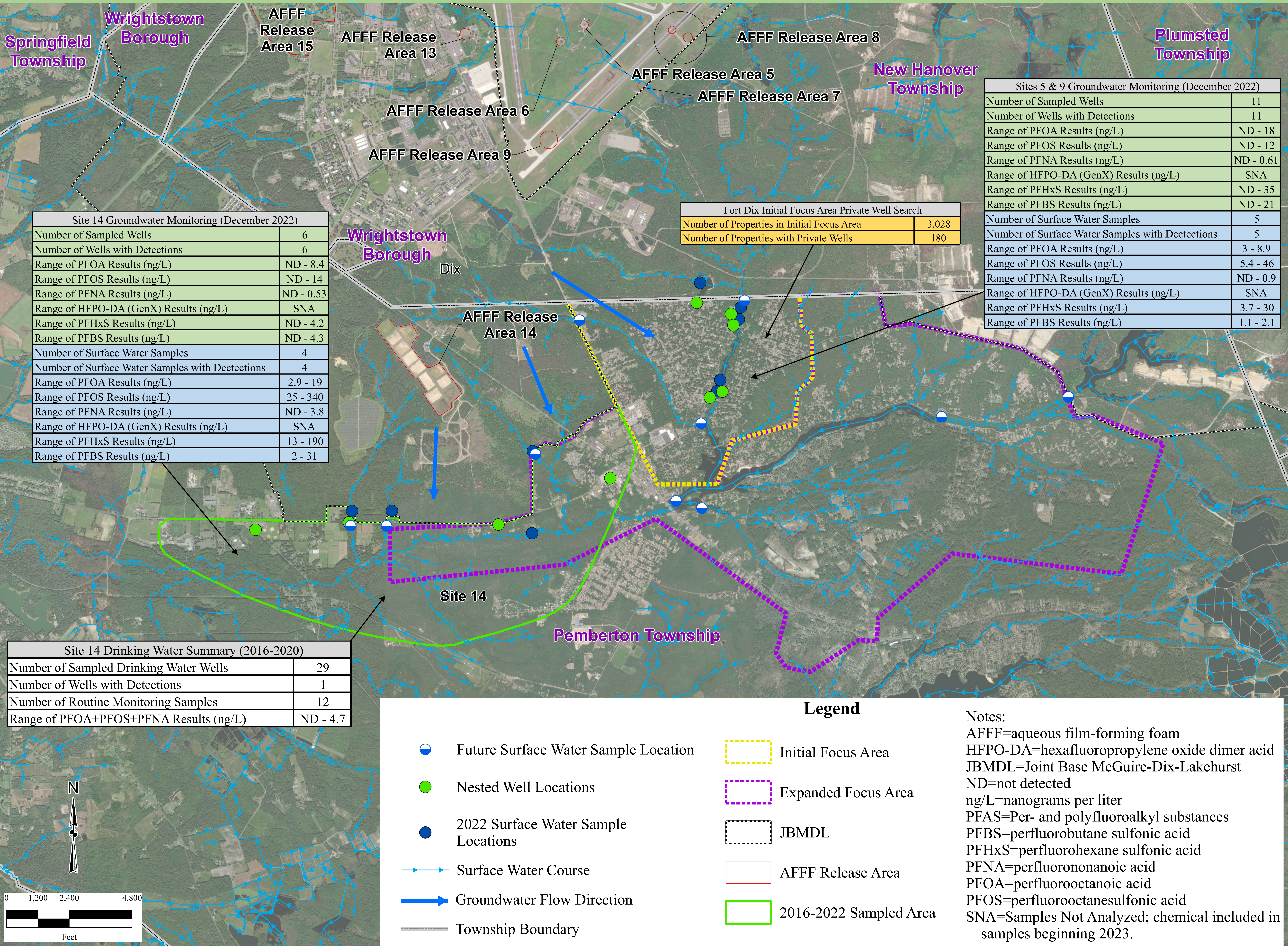
Site 4 Drinking Water Summary (2016-2020)	
Number of Sampled Drinking Water Wells	30
Number of Wells with Detections	1
Number of Routine Monitoring Samples	8
Range of PFOA+PFOS+PFNA Results (ng/L)	ND - 4

McGuire Initial Focus Area Private Well Search	
Number of Properties in Initial Focus Area	0
Number of Properties with Private Wells	0





# PFAS Off-Base Response Fort Dix Sampling Area, Joint Base McGuire-Dix-Lakehurst—New Jersey





# PFAS Off-Base Response Lakehurst Sampling Area, Joint Base McGuire-Dix-Lakehurst—New Jersey

